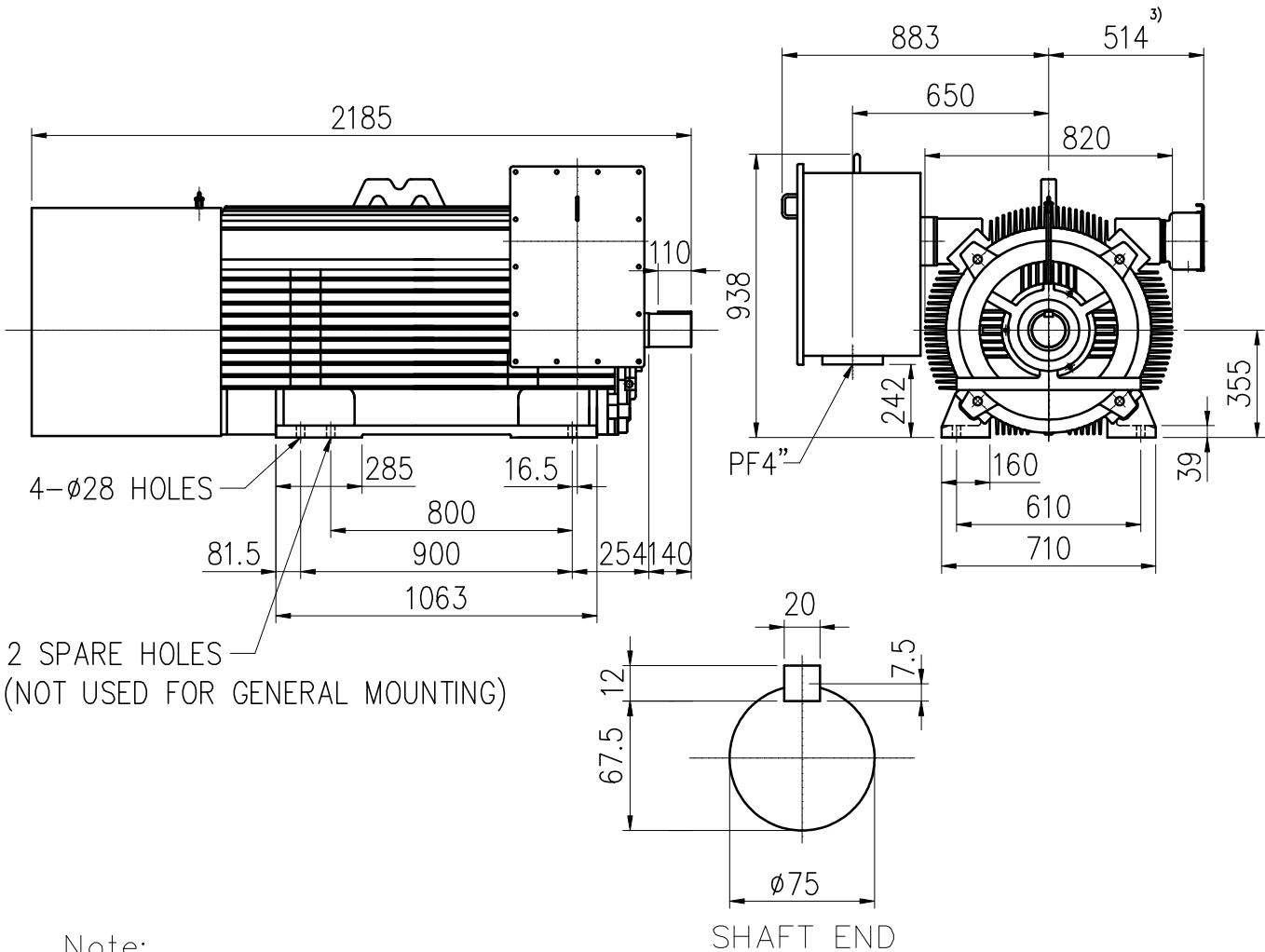


# OUTLINE 3-PHASE INDUCTION MOTOR

TOTALLY ENCLOSED  
FAN COOLED  
SQUIRREL CAGE ROTOR  
ANTI-FRICTION BEARING

PROJECT NO:  
CUSTOMER:  
PO. NO:  
ORDER NO:

OUTPUT	POLE	SYN. SPEED	VOLT.	FREQ	INSUL.	TIME RATING	MODEL	FRAME NO.
		RPM.	V.	HZ	F	CONT.	TIK-FCKW	N355LL



2 SPARE HOLES  
(NOT USED FOR GENERAL MOUNTING)

SHAFT END

- Note:
- 1) Tolerance of shaft end diameter: m6
  - 2) Tolerance of shaft center height: +0 , -1.0
  - 3) Auxiliary terminal box is optional and dependent on specified accessories.
  - 4) For direct coupling.
  - 5) Approximate weight = 3000 kg
  - 6) Drive end bearing: 6218C3  
Opposite drive end bearing: 6218C3
  - 7) Direction of rotation : C.W (viewed from non-drive end)

Preliminary Drawing for Reference Only



BASIC DWG NO: AL-FB-5606

CERTIFIED BY:		DATE:
DESIGNED	C.Y.WEN	DIMENSIONS IN mm
CHECKED	T.F.CHENG	3RD ANGLE PROJECTION
APPROVED	T.F.CHENG	DATE: NOV.30.2009