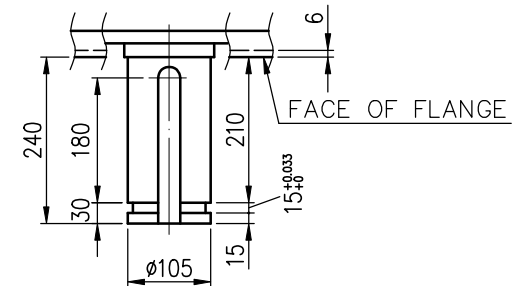
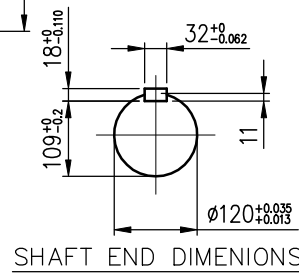
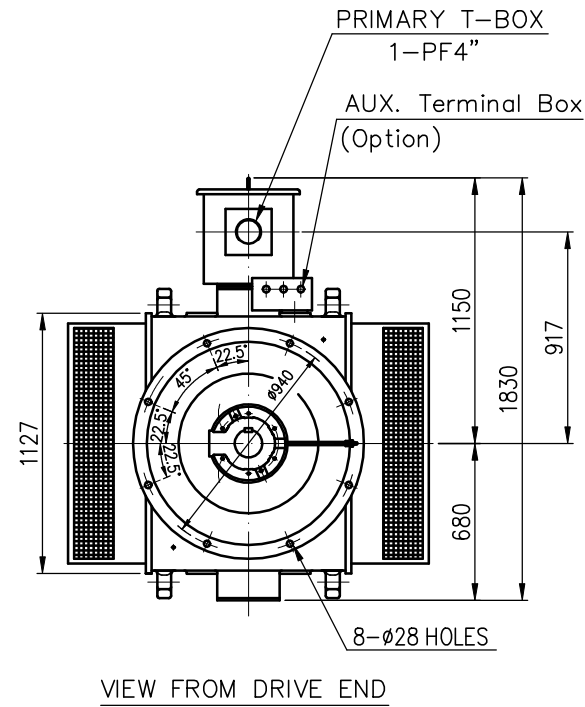
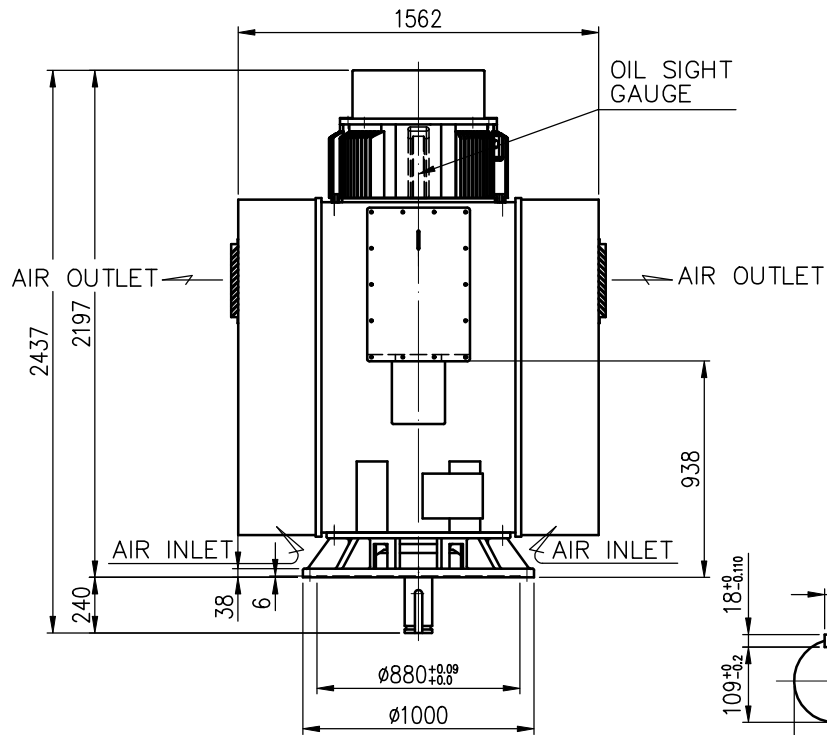


TECHNICAL INFORMATION

- ENCLOSURE: WPII
- BEARING LUBRICATION:  
DRIVE END: GREASE  
NON DRIVE END : OIL
- THRUST LOAD CAPACITY:  
\_\_\_\_\_ KG CONTINUOUS DOWN  
\_\_\_\_\_ KG MOMENTARY DOWN  
\_\_\_\_\_ KG INSTANTANEOUS UP
- ROTATION: \_\_\_\_\_  
VIEW FROM NON-DRIVE END
- \_\_\_\_\_ NONREVERSE RATCHET MECHANISM



Preliminary Drawing for Reference Only

ADDITIONAL INFORMATION	CERTIFIED BY: _____ DATE: _____					BEARING	PROTECTION
	OUTPUT	POLES	VOLTS	FREQ. Hz	SYN. SPEED r/min	LOAD SIDE 6226C3	IP-23
	TYPE TIK	FORM VCKTWII	INS.CLASS F	RATING S1	FRAME N3511V	FLANGE	APPROX. WEIGHT MOTOR 4100 kg
		REV.MARK		APPROVED BY T.F.CHENG FEB.10.2011	CHECKED BY T.F.CHENG FEB.10.2011	TITLE <b>OUTLINE FOR THREE PHASE INDUCTION MOTOR</b>	
	DATE	DESIGNED BY C.Y.WEN FEB.10.2011		DRAWN BY C.Y.WEN FEB.10.2011			
	APPROVED BY	UNITS MM					
	REVISED BY						
	CONTENT				DRAWING NO. AL-VB-1774	REV.MARK 00	