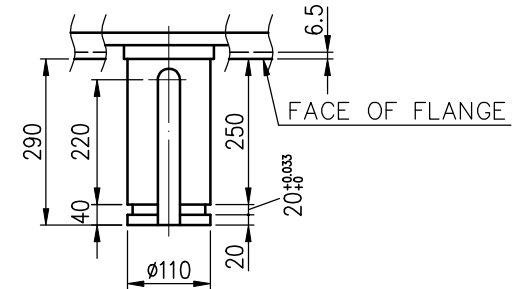


SHAFT END DIMENSIONS

TECHNICAL INFORMATION

1. ENCLOSURE: WPII
2. BEARING LUBRICATION:
DRIVE END: OIL
NON DRIVE END : OIL
3. THRUST LOAD CAPACITY.
_____ KG CONTINUOUS DOWN
_____ KG MOMENTARY DOWN
_____ KG INSTANTANEOUS UP
4. ROTATION: _____
VIEW FROM NON-DRIVE END
5. _____ NONREVERSE RATCHET MECHANISM



Preliminary Drawing for Reference Only

| CERTIFIED BY: | | DATE: | | | | BEARING | PROTECTION |
|------------------------|-------------|-----------------|----------------|---|--|---|------------------------------------|
| ADDITIONAL INFORMATION | OUTPUT | POLES | VOLTS | FREQ. Hz | SYN. SPEED r/min | LOAD SIDE 6036 | IP-23 |
| | TYPE TIK | FORM VCKTWII | INS.CLASS F | RATING S1 | FRAME N4012V | OPP.L.SIDE 29334 6032 | APPROX. WEIGHT MOTOR 6600 kg |
| | REV.MARK | REVISIONS | | APPROVED BY T.F.CHENG FEB.10.2011 | CHECKED BY T.F.CHENG FEB.10.2011 | TITLE OUTLINE FOR THREE PHASE INDUCTION MOTOR | |
| | DATE | | | DESIGNED BY C.Y.WEN FEB.10.2011 | DRAWN BY C.Y.WEN FEB.10.2011 | | |
| | APPROVED BY | | | UNITS MM | | | |
| | REVISED BY | | | | | | |
| | CONTENT | | | | | DRAWING NO. AL-VB-1779 | REV.MARK 00 |