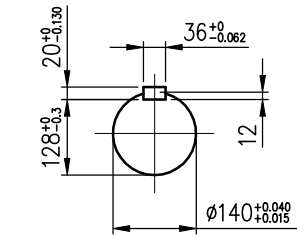
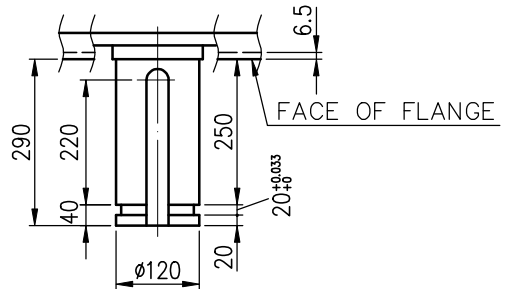


VIEW FROM DRIVE END



SHAFT END DIMENSIONS



TECHNICAL INFORMATION

- ENCLOSURE: WP11
- BEARING LUBRICATION:
DRIVE END: OIL
NON DRIVE END : OIL
- THRUST LOAD CAPACITY:
_____ KG CONTINUOUS DOWN
_____ KG MOMENTARY DOWN
_____ KG INSTANTANEOUS UP
- ROTATION: _____
VIEW FROM NON-DRIVE END
- _____ NONREVERSE RATCHET MECHANISM

Preliminary Drawing for Reference Only

ADDITIONAL INFORMATION	CERTIFIED BY: _____ DATE: _____					BEARING	PROTECTION
	OUTPUT	POLES	VOLTS	FREQ. Hz	SYN. SPEED r/min	LOAD SIDE 6040	IP-23
	TYPE TIK	FORM VCKTWII	INS.CLASS F	RATING S1	FRAME N4514V	FLANGE	APPROX. WEIGHT MOTOR 8950 kg
	REV.MARK	DATE	APPROVED BY	REVISED BY	REVISIONS	APPROVED BY T.F.CHENG FEB.11.2011	CHECKED BY T.F.CHENG FEB.11.2011
				SCALE	DESIGNED BY C.Y.WEN FEB.11.2011	DRAWN BY C.Y.WEN FEB.11.2011	TITLE OUTLINE FOR THREE PHASE INDUCTION MOTOR
				UNITS MM			DRAWING NO. AL-VB-1781
		CONTENT					REV.MARK (00)