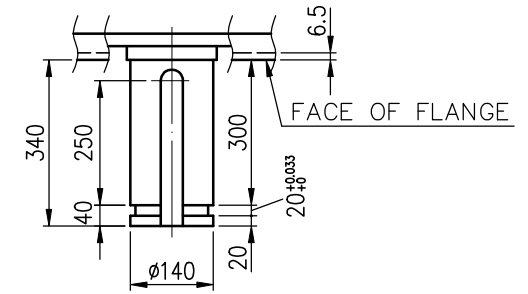


TECHNICAL INFORMATION

- ENCLOSURE: WPII
- BEARING LUBRICATION:  
DRIVE END: OIL  
NON DRIVE END : OIL
- THRUST LOAD CAPACITY:  
\_\_\_\_\_ KG CONTINUOUS DOWN  
\_\_\_\_\_ KG MOMENTARY DOWN  
\_\_\_\_\_ KG INSTANTANEOUS UP
- ROTATION: \_\_\_\_\_  
VIEW FROM NON-DRIVE END
- \_\_\_\_\_ NONREVERSE RATCHET MECHANISM



SHAFT END DIMENSIONS

Preliminary Drawing for Reference Only

ADDITIONAL INFORMATION	CERTIFIED BY: _____ DATE: _____					BEARING	PROTECTION
	OUTPUT	POLES	VOLTS	FREQ. Hz	SYN. SPEED r/min	LOAD SIDE 6044	IP-23
	TYPE TIK	FORM VCKTWII	INS.CLASS F	RATING S1	FRAME N5014V	FLANGE	APPROX. WEIGHT MOTOR 9800 KG
		REV.MARK		APPROVED BY T.F.CHENG FEB.11.2011	CHECKED BY T.F.CHENG FEB.11.2011	TITLE <b>OUTLINE FOR THREE PHASE INDUCTION MOTOR</b>	
		DATE		DESIGNED BY C.Y.WEN FEB.11.2011	DRAWN BY C.Y.WEN FEB.11.2011		
		APPROVED BY					
		REVISED BY		UNITS MM			
		CONTENT				DRAWING NO. <b>AL-VB-1784</b>	REV.MARK <b>(00)</b>