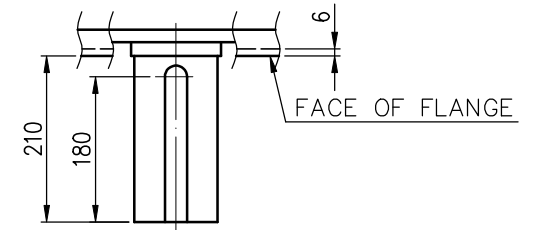


TECHNICAL INFORMATION

1. ENCLOSURE: WPII
2. BEARING LUBRICATION:  
DRIVE END: GREASE  
NON DRIVE END : GREASE
3. ROTATION: \_\_\_\_\_  
VIEW FROM NON-DRIVE END
4. WITHOUT NONREVERSE RATCHET MECHANISM
5. EXTRA DOWN THRUST LOAD SHALL NOT BE ALLOWED



PRELIMINARY ONLY

ADDITIONAL INFORMATION	CERTIFIED BY: _____ DATE: _____					BEARING	PROTECTION
		OUTPUT	POLES	VOLTS	FREQ. Hz	SYN. SPEED r/min	LOAD SIDE 6226C3
	TYPE TIK	FORM VCKTWII	INS.CLASS F	RATING S1	FRAME N3511V	OPP.L.SIDE 7324B	APPROX. WEIGHT MOTOR 3900 kg
		REV.MARK		APPROVED BY T.F.CHENG FEB.14.2011	CHECKED BY T.F.CHENG FEB.14.2011	TITLE <b>OUTLINE FOR THREE PHASE INDUCTION MOTOR</b>	
		DATE		DESIGNED BY C.Y.WEN FEB.14.2011	DRAWN BY C.Y.WEN FEB.14.2011		
		APPROVED BY		UNITS mm			
		REVISED BY					
		CONTENT			DRAWING NO. AL-VB-1798	REV.MARK 00	