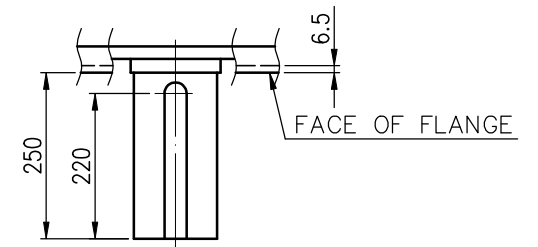


TECHNICAL INFORMATION

- ENCLOSURE: WPII
- BEARING LUBRICATION:
DRIVE END: GREASE
NON DRIVE END : GREASE
- ROTATION: _____
VIEW FROM NON-DRIVE END
- WITHOUT NONREVERSE RATCHET MECHANISM
- EXTRA DOWN THRUST LOAD SHALL NOT BE ALLOWED



VIEW FROM DRIVE END

SHAFT END DIMENSIONS

PRELIMINARY ONLY

CERTIFIED BY: _____				DATE: _____			BEARING	PROTECTION
ADDITIONAL INFORMATION	OUTPUT	POLES	VOLTS	FREQ. Hz	SYN. SPEED r/min		LOAD SIDE 6228C3	IP-23
	TYPE TIK	FORM VCKTWII	INS.CLASS F	RATING S1	FRAME N4012V	FLANGE	OPP.L.SIDE 7324B	APPROX. WEIGHT MOTOR 6400 KG
		REV.MARK	REVISIONS		APPROVED BY T.F.CHENG AUG.31.2010	CHECKED BY T.F.CHENG AUG.31.2010	TITLE OUTLINE FOR THREE PHASE INDUCTION MOTOR	
		DATE			DESIGNED BY C.Y.WEN AUG.31.2010	DRAWN BY C.Y.WEN AUG.31.2010		
		APPROVED BY						
		REVISED BY						
		CONTENT		UNITS mm			DRAWING NO. AL-VB-1802	REV.MARK 00