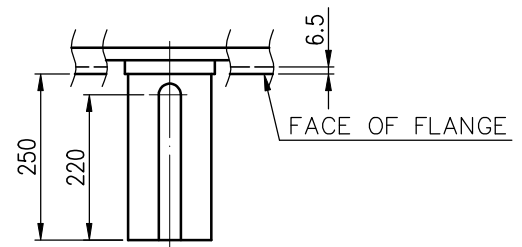


TECHNICAL INFORMATION

1. ENCLOSURE: WPII
2. BEARING LUBRICATION:
DRIVE END: GREASE
NON DRIVE END : GREASE
3. ROTATION: _____
VIEW FROM NON-DRIVE END
4. WITHOUT NONREVERSE RATCHET MECHANISM
5. EXTRA DOWN THRUST LOAD SHALL NOT BE ALLOWED



VIEW FROM DRIVE END

SHAFT END DIMENSIONS

PRELIMINARY ONLY

CERTIFIED BY: _____		DATE: _____				BEARING	PROTECTION
ADDITIONAL INFORMATION	OUTPUT	POLES	VOLTS	FREQ. Hz	SYN. SPEED r/min	LOAD SIDE 6228C3	IP-23
	TYPE TIK	FORM VCKTWII	INS.CLASS F	RATING S1	FRAME N4012V	OPP.L.SIDE 7324B	APPROX. WEIGHT MOTOR 6400 kg
	REV.MARK	REVISIONS		APPROVED BY T.F.CHENG FEB.14.2011	CHECKED BY T.F.CHENG FEB.14.2011	TITLE OUTLINE FOR THREE PHASE INDUCTION MOTOR	
	DATE			DESIGNED BY C.Y.WEN FEB.14.2011	DRAWN BY C.Y.WEN FEB.14.2011		
	APPROVED BY			UNITS mm			
	REVISED BY						
	CONTENT					DRAWING NO. AL-VB-1803	REV.MARK 00