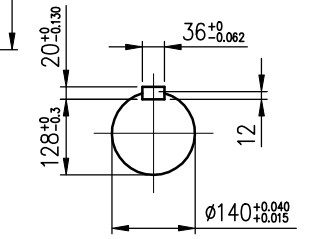


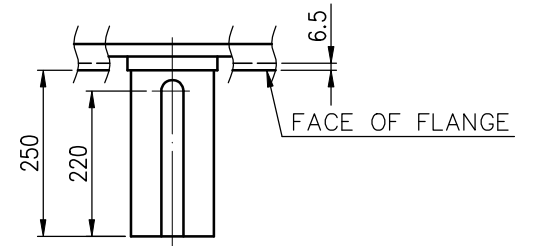
VIEW FROM DRIVE END



SHAFT END DIMENSIONS

TECHNICAL INFORMATION

- ENCLOSURE: WPII
- BEARING LUBRICATION:  
DRIVE END: GREASE  
NON DRIVE END : GREASE
- ROTATION: \_\_\_\_\_  
VIEW FROM NON-DRIVE END
- WITHOUT NONREVERSE RATCHET MECHANISM
- EXTRA DOWN THRUST LOAD SHALL NOT BE ALLOWED



PRELIMINARY ONLY

ADDITIONAL INFORMATION	CERTIFIED BY: _____ DATE: _____					BEARING	PROTECTION
	OUTPUT	POLES	VOLTS	FREQ. Hz	SYN. SPEED r/min	LOAD SIDE 6230C3	IP-23
	TYPE TIK	FORM VCKTWII	INS.CLASS F	RATING S1	FRAME N4514V	OPP.L.SIDE 7330B	APPROX. WEIGHT MOTOR 8700 kg
	REV.MARK	DATE	APPROVED BY	DESIGNED BY	CHECKED BY	TITLE	
		REVISOR	SCALE	T.F.CHENG FEB.14.2011	T.F.CHENG FEB.14.2011	<b>OUTLINE FOR THREE PHASE INDUCTION MOTOR</b>	
		REVISOR	UNITS mm	C.Y.WEN FEB.14.2011	C.Y.WEN FEB.14.2011		
		CONTENT				DRAWING NO.	REV.MARK
						AL-VB-1804	00