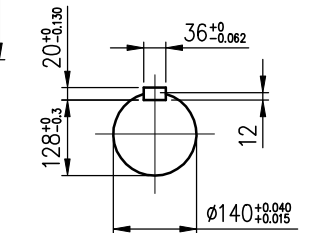


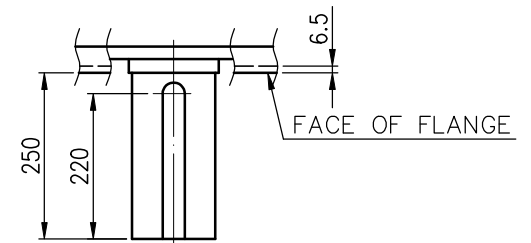
TECHNICAL INFORMATION

1. ENCLOSURE: WPII
2. BEARING LUBRICATION:
DRIVE END: GREASE
NON DRIVE END : GREASE
3. ROTATION: _____
VIEW FROM NON-DRIVE END
4. WITHOUT NONREVERSE RATCHET MECHANISM
5. EXTRA DOWN THRUST LOAD SHALL NOT BE ALLOWED



SHAFT END DIMENSIONS

VIEW FROM DRIVE END



PRELIMINARY ONLY

ADDITIONAL INFORMATION	CERTIFIED BY: _____ DATE: _____					BEARING	PROTECTION
	OUTPUT	POLES	VOLTS	FREQ. Hz	SYN. SPEED r/min	LOAD SIDE 6230C3	IP-23
	TYPE TIK	FORM VCKTWII	INS.CLASS F	RATING S1	FRAME N4514V	OPP.L.SIDE 7330B	APPROX. WEIGHT MOTOR 8700 kg
	REV.MARK	DATE	APPROVED BY	REVISED BY	REVISIONS	TITLE <i>OUTLINE FOR THREE PHASE INDUCTION MOTOR</i>	
				SCALE	APPROVED BY T.F.CHENG FEB.14.2011	CHECKED BY T.F.CHENG FEB.14.2011	DRAWING NO. <i>AL-VB-1805</i>
				UNITS mm	DESIGNED BY C.Y.WEN FEB.14.2011	DRAWN BY C.Y.WEN FEB.14.2011	
		CONTENT					