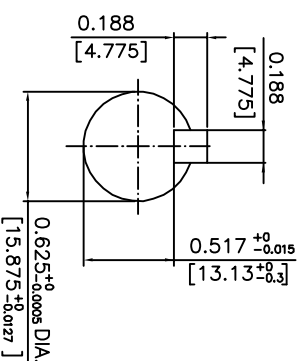
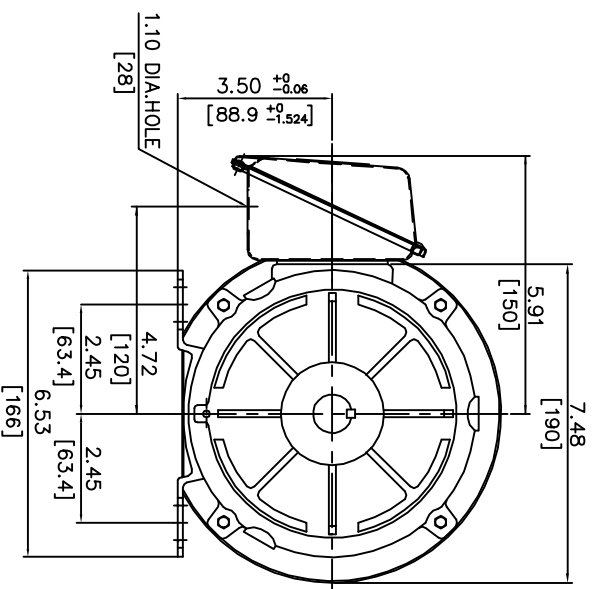
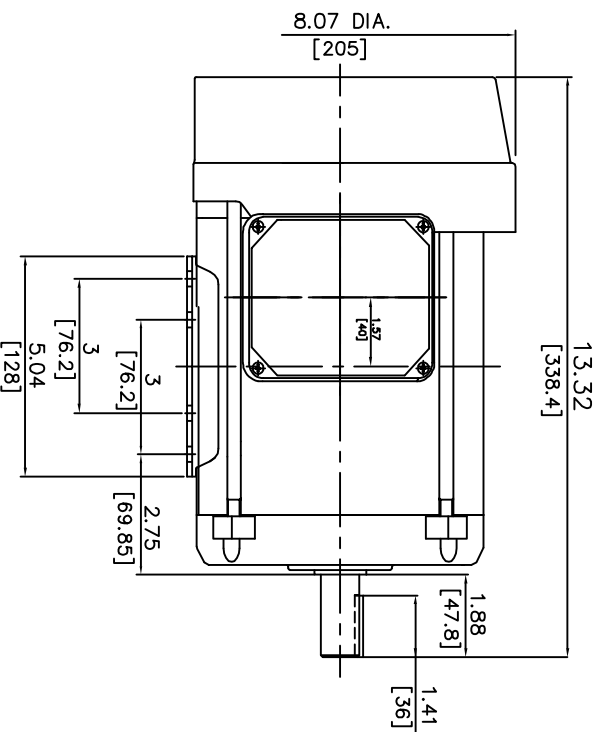


ALTERNATING CURRENT MOTORS

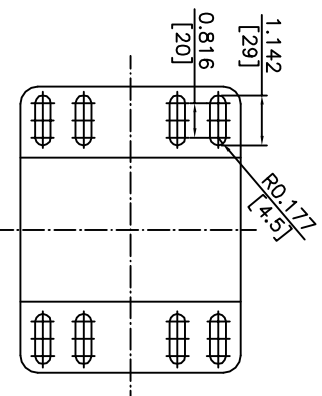
ENCLOSURE: TOTALLY-ENCLOSED
MOUNTING: FOOT

SQUIRREL-CAGE INDUCTION
ROLLED STEEL FRAME
FRAME 56C

COOLING: FAN COOLED



- NOTES:
- (1) DIMENSIONS ARE IN INCHES.
 - (2) APPROXIMATE WEIGHT = 1/3HP, 2P, - 34 LBS. 1/3HP, 4P, - 33 LBS.
1/2HP, 2P, - 33 LBS. 1/2HP, 4P, - 32 LBS.
3/4HP, 2P, - 35 LBS. 3/4HP, 4P, - 35 LBS.
1HP, 2P, - 38 LBS. 1HP, 4P, - 39 LBS.
1 1/2HP, 2P, - 42 LBS. 1 1/2HP, 4P, - 44 LBS.
2HP, 2P, - 49 LBS. 2HP, 4P, - 47 LBS.
 - (3) DRIVE END BEARING 6205ZZ
 - (4) OPPOSITE DRIVE END BEARING 6205ZZ
 - (5) INTERNAL VOLUME OF CONDUIT BOX = 15.9 CU. IN.



FRAME _____ ITEM _____ HP _____ RPM _____ PH _____ HZ _____ VOLTS _____
 ORDER _____

TATUNG SHANGHAI

DR. BY _____ ALUMINUM
 CK. BY _____ SIKY SHANG
 APP. BY _____ C.L. WANG
 DATE _____ 2016.06.15

DIMENSION SHEET SAS-011481