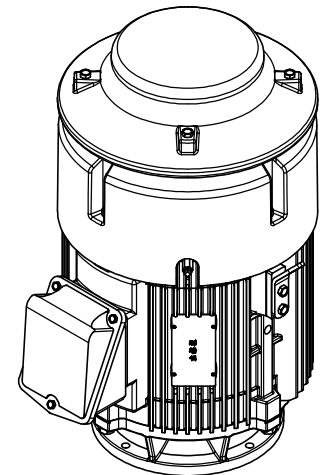
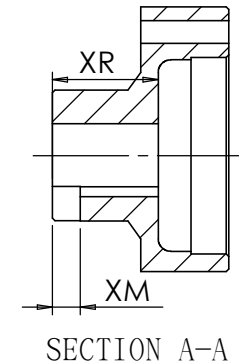
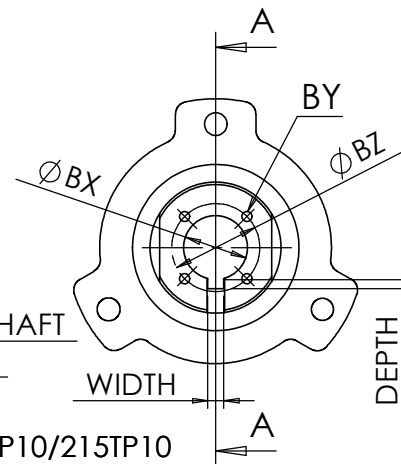


Coupling kits no.	BX	BY	BZ	XM	XR	KEYWAY	
						WIDTH	DEPTH
434-59233-96	0.751	10-32UNF	1.375	0.43	1.65	0.188	0.109
434-59233-95	0.876					0.250	0.140
434-59233-91	1.001						
434-59233-92	1.188	1/4-20UNC	1.750				
434-59233-93	1.251						
434-59233-94	0.751	N/A				N/A	



FRAME 213TP10/215TP10

\* CLEARANCE TO HOLD

\*\* CONDUIT BOX CAN BE ROTATED IN STEP OF 90°

\*\*\*MAX. DOWN THRUST 2P: 1800 lbs

4P: 2300 lbs

6P: 2600 lbs

OUTPUT HP	POLE	VOLT	FREQ.	SYN. R.P.M.	BEARING LOWER SIDE 6209ZZ UPPER SIDE 7309B	APPROX WEIGHT 310 lb	FILE NO. : CUSTOMER : PO. NO. : ORDER NO. :
TYPE TEFC	FORM VHS	INS. CLASS F	RATING	FRAME 213/5TP	PROTECTION IP 56		
REV. MARK		APPROVED BY T.M.LIAO		CHECKED BY C.P.SU		TITLE OUTLINE FOR THREE PHASE INDUCTION MOTOR	
DATE		DESIGNED BY C.C.CHU		DRAWING BY C.C.CHU			
APPROVED BY		SCALE inch				DRAWING NO. AS-061060	
REVISED BY		UNIT inch				REV.MARK 00	
CONTENT		REVISION		TATUNG			