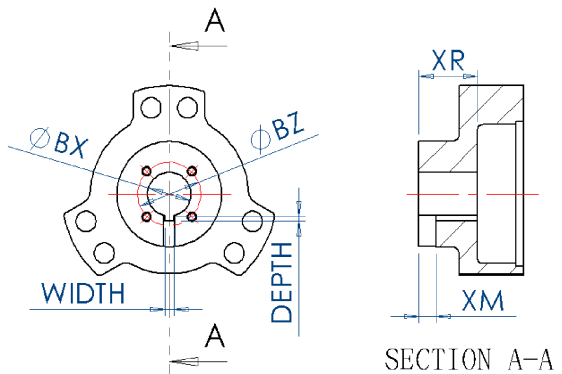
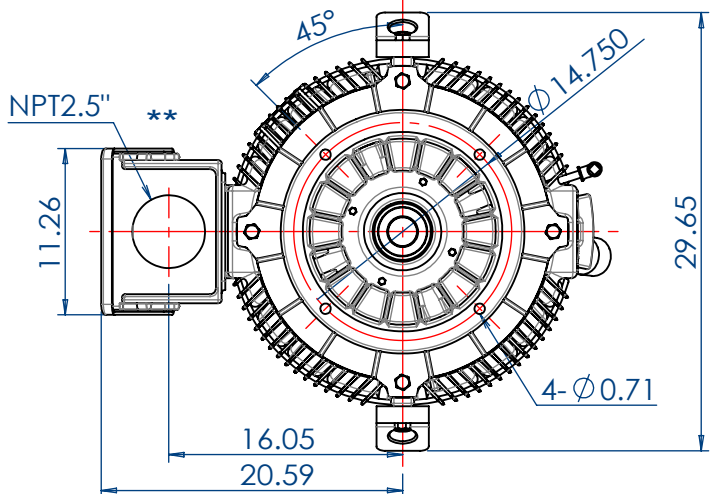
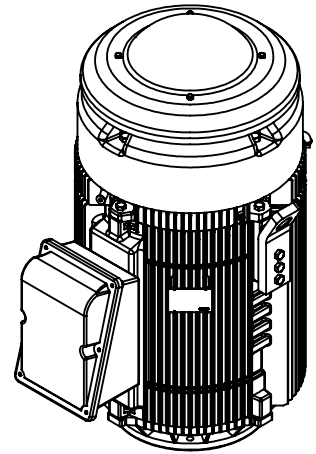


Ø 1.938 MAX. PUMP SHAFT  
 Ø 2.000 HOLE IN SHAFT



SECTION A-A



FRAME 444TP16/445TP16  
 \* CLEARANCE TO HOLD  
 \*\* CONDUIT BOX CAN BE ROTATED IN STEP OF 90°  
 \*\*\*MAX. DOWN THRUST : 4P = 9550 lbs  
 6P = 11050 lbs

| Coupling kits no. | BX    | BY        | BZ    | XM   | XR   | KEYWAY |       |
|-------------------|-------|-----------|-------|------|------|--------|-------|
|                   |       |           |       |      |      | WIDTH  | DEPTH |
| D34-07581-92      | 1.501 | 1/4-20UNC | 2.125 | 0.63 | 6.67 | 0.375  | 0.168 |
| D34-07581-93      | 1.688 |           | 2.500 |      |      | 0.171  |       |
| D34-07581-94      | 1.938 |           |       |      |      | 0.222  |       |
| D34-07581-91      | 1.501 | N/A       |       |      |      | N/A    |       |

|              |             |                 |                         |                      |   |   |  |
|--------------|-------------|-----------------|-------------------------|----------------------|---|---|--|
| OUTPUT<br>HP | POLE        | VOLT            | FREQ.                   | SYN. R.P.M.          | BEARING<br>LOWER SIDE<br>6218ZZ<br>UPPER SIDE<br>7224DT | APPROX WEIGHT<br>2070lb                             | FILE NO. :<br>CUSTOMER :<br>PO. NO. :<br>ORDER NO. : |
| TYPE<br>TEFC | FORM<br>VHS | INS. CLASS<br>F | RATING                  | FRAME<br>444/5TP     | PROTECTION<br>IP 56                                     | TITLE<br>OUTLINE FOR THREE PHASE<br>INDUCTION MOTOR | DRAWING NO.<br>AS-061066                             |
| REVISION     | REV MARK    | DATE            | APPROVED BY<br>T.M.LIAO | CHECKED BY<br>C.P.SU | DESIGNED BY<br>C.C.CHU                                  | DRAWING BY<br>C.C.CHU                               | REV.MARK<br>00                                       |
| SCALE        | UNIT        | inch            | APPROVED BY<br>T.M.LIAO |                      | CHECKED BY<br>C.P.SU                                    |   |  |
| CONTENT      |             | REVISION        |                         | TATUNG               |   | DRAWING NO.<br>AS-061066                            |  |