

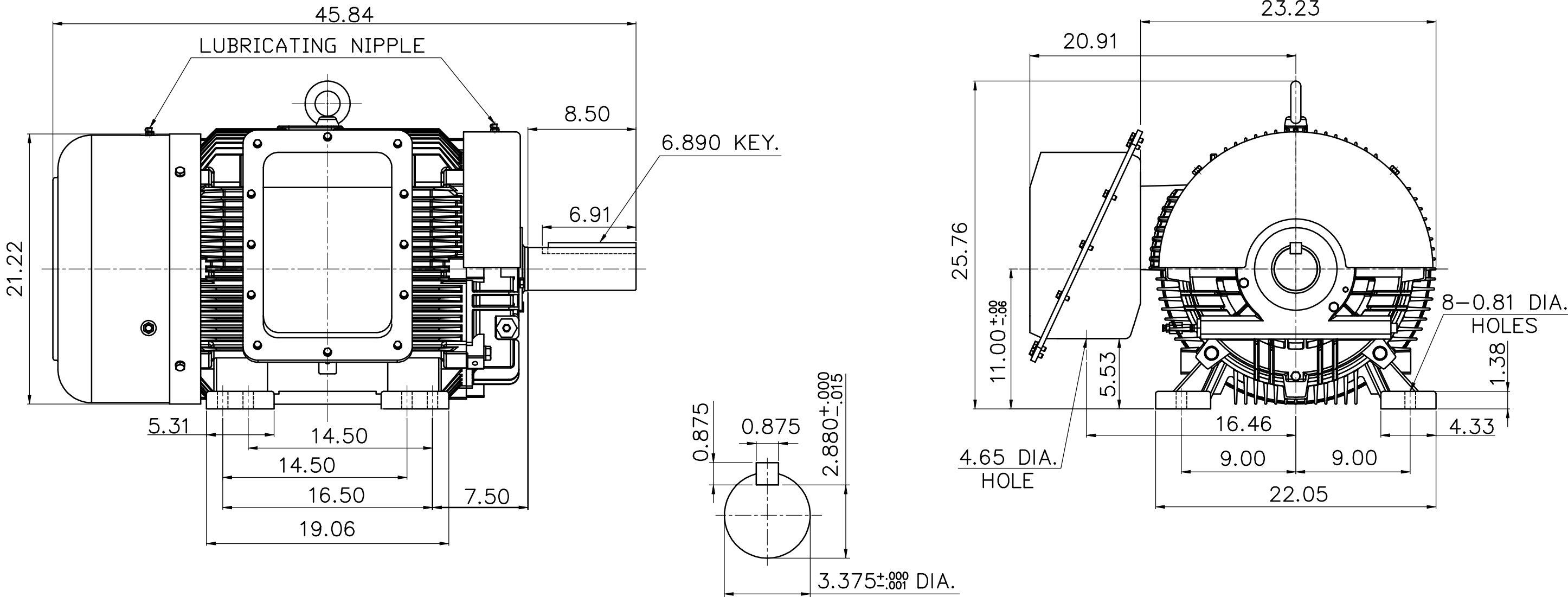
SUPER-MAX ALTERNATING CURRENT MOTORS

SQUIRREL-CAGE INDUCTION

ENCLOSURE: TOTALLY ENCLOSED
MOUNTING: FOOT

CAST IRON FRAME
FRAME 444T/445T

COOLING: FAN COOLED



2:1

- (1) DIMENSIONS ARE IN INCHES.
- (2) APPROXIMATE WEIGHT :
125 HP, 4P, 1610LBS 100 HP, 6P, 1520LBS
150 HP, 4P, 1780LBS 125 HP, 6P, 1808LBS
- (3) DRIVE END BEARING 6318Z/C3
OPPOSITE DRIVE END BEARING 6316Z/C3
- (4) INTERNAL VOLUME OF CONDUIT BOX= 1185 CU , IN.

FRAME- _____ CERTIFIED FOR- _____
ORDER- _____ ITEM _____ HP- _____ RPM- _____ PH- _____ HZ- _____ VOLTS- _____



DR. BY C. W. CHOU
CK. BY L. J. LEE
APP. BY L. J. LEE
DATE 2016/08/09

DIMENSION SHEET

AS-052632