

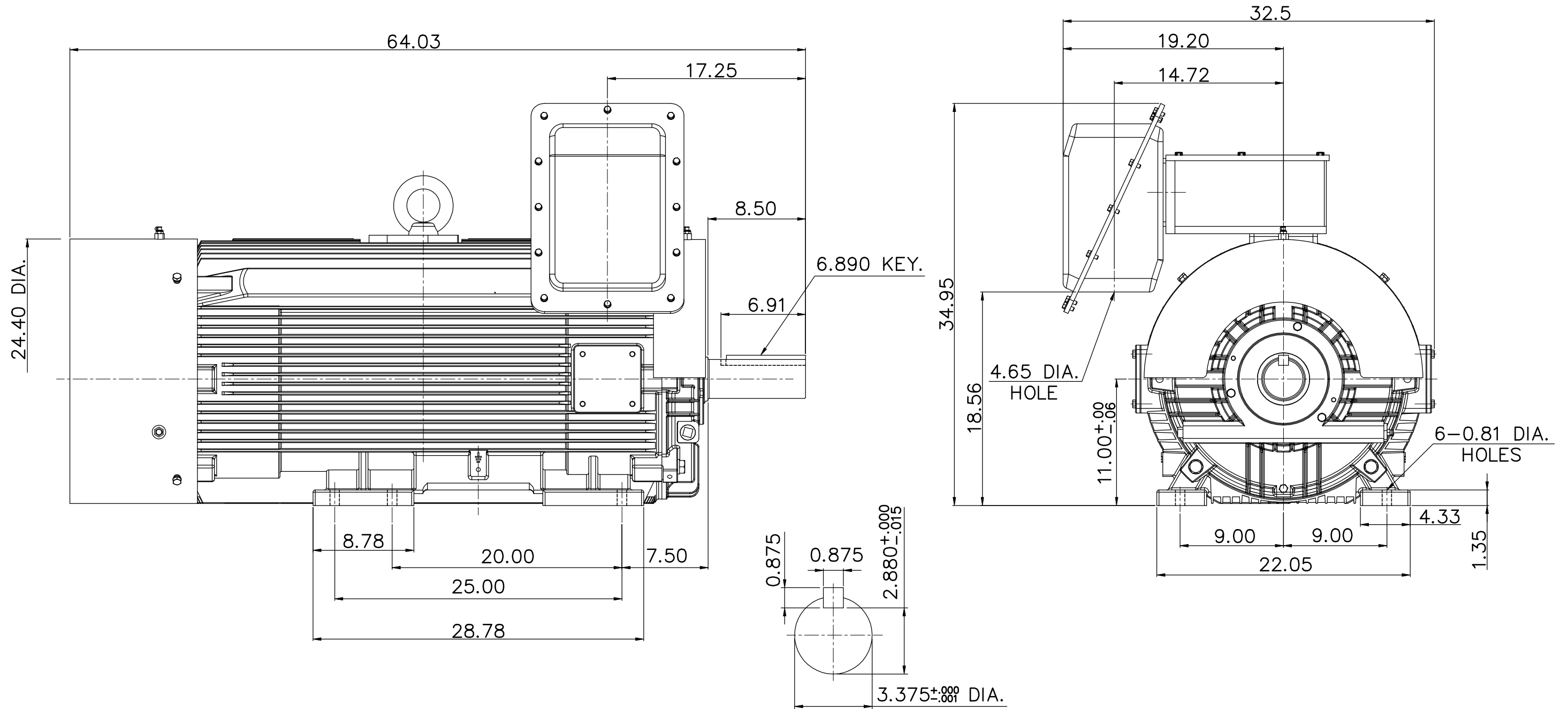
SUPER-MAX ALTERNATING CURRENT MOTORS

SQUIRREL-CAGE INDUCTION

ENCLOSURE: TOTALLY ENCLOSED
MOUNTING: FOOT

CAST IRON FRAME
FRAME S447T/S449T

COOLING: FAN COOLED



(1) DIMENSIONS ARE IN INCHES.

(2) APPROXIMATE WEIGHT

400 HP, 4P, 3680LBS; 300 HP, 6P, 3530LBS

350 HP, 4P, 3460LBS; 350 HP, 6P, 3750LBS

(3) DRIVE END BEARING 6320

OPPOSITE DRIVE END BEARING 6316

(4) INTERNAL VOLUME OF CONDUIT BOX = 1185 CU , IN.

FRAME- _____ CERTIFIED FOR- _____
ORDER- _____ ITEM _____ HP- _____ RPM- _____ POLE- _____ HZ- _____ VOLTS- _____



DR. BY J. J. Syu
CK. BY C. P. Su
APP. BY D. M. Liao
DATE 2017/02/06

DIMENSION
SHEET

AS-060687