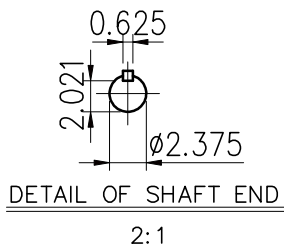
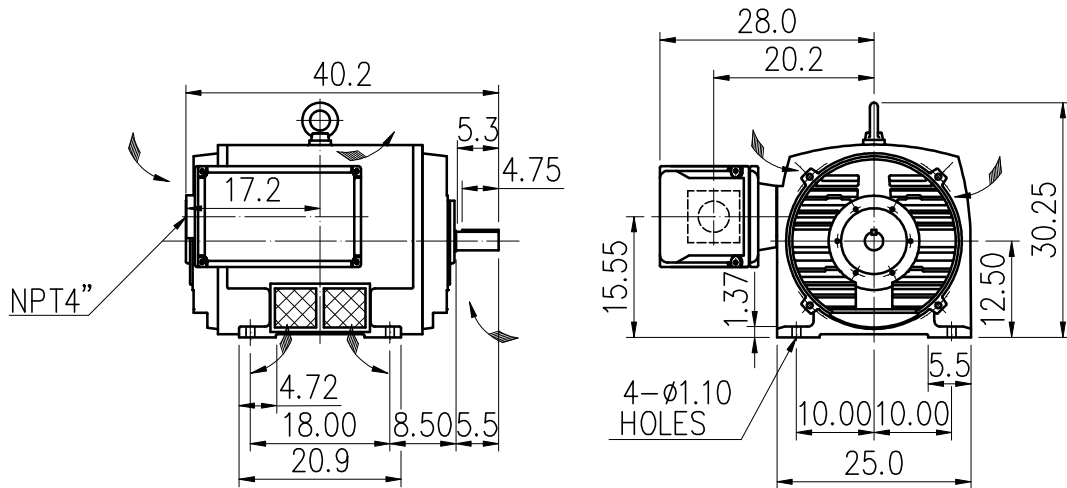


| OUTLINE 3-PHASE INDUCTION GENERATOR | | | WEATHER PROTECTED TYPE I SQUIRREL CAGE ROTOR ANTI-FRICTION BEARING | | | PROJECT NO: | | |
|--|------|------------|---|------|--------|-------------|---------|-----------|
| | | | | | | CUSTOMER: | | |
| | | | | | | PO. NO: | | |
| | | | | | | ORDER NO: | | |
| OUTPUT | POLE | SYN. SPEED | VOLT. | FREQ | INSUL. | TIME RATING | MODEL | FRAME NO. |
| | | RPM. | V. | HZ | F | CONT. | TIK-VCK | 505 |



- 1) Tolerance of shaft end diameter : +0.00 inch ~ -0.06 inch.
- 2) Tolerance of shaft center height : +0.00 inch ~ -0.001 inch.
- 3) For direct coupling.
- 4) Approximate weight = 2500 LBS
- 5) Drive end bearing: 6314C3
Opposite drive end bearing: 6314C3

Preliminary Drawing for Reference Only



BASIC DWG NO: AL-VB-1744

| | | |
|---------------|-----------|----------------------|
| CERTIFIED BY: | | DATE: |
| DESIGNED | C.Y.WEN | DIMENSIONS IN INCH |
| CHECKED | T.F.CHENG | 3RD ANGLE PROJECTION |
| APPROVED | T.F.CHENG | DATE: JAN.25.2010 |