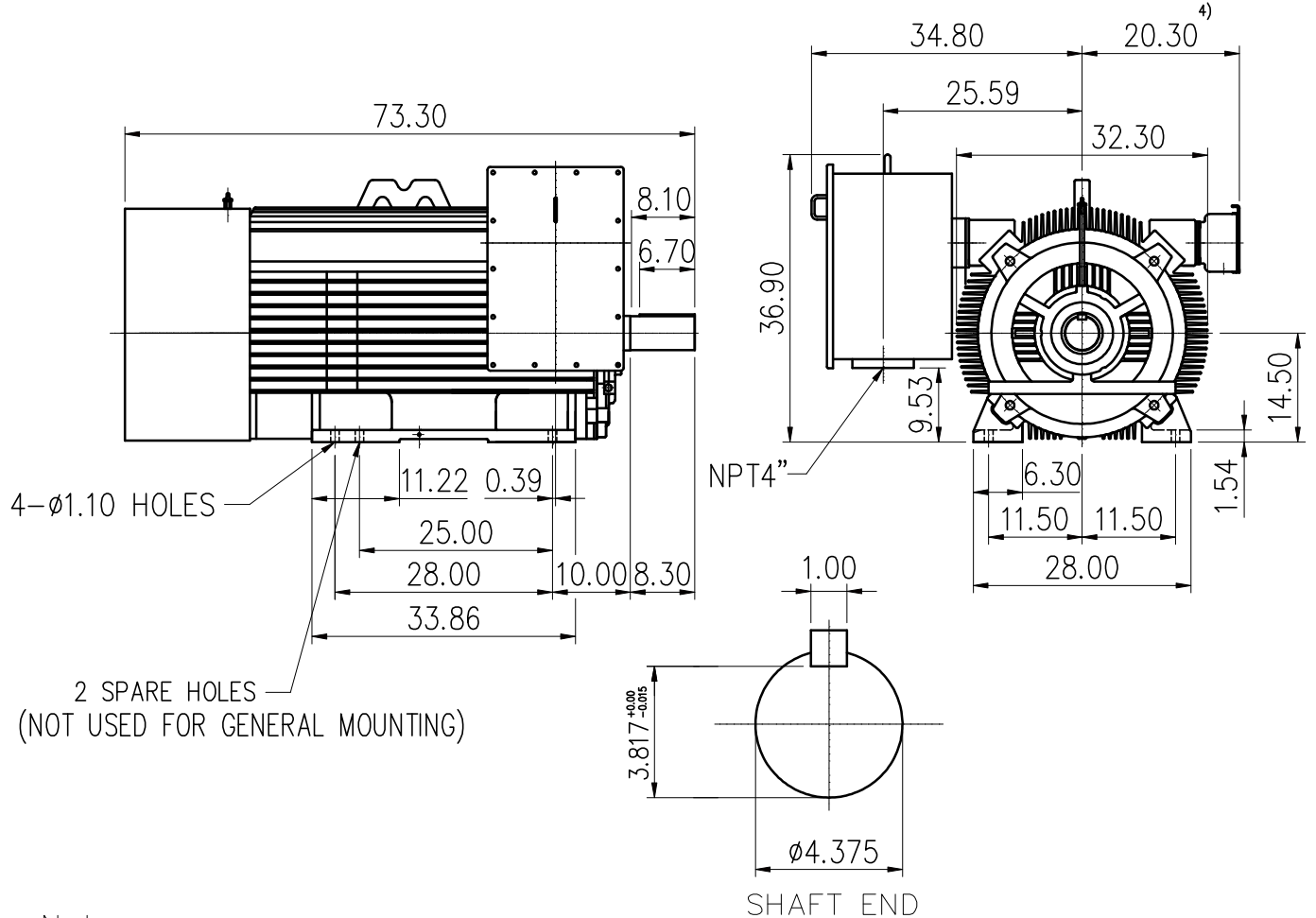


OUTLINE 3-PHASE INDUCTION MOTOR			TOTALLY ENCLOSED FAN COOLED SQUIRREL CAGE ROTOR ANTI-FRICTION BEARING				PROJECT NO:	
							CUSTOMER:	
						ORDER NO:		

OUTPUT	POLE	SYN. SPEED	VOLT.	FREQ	INSUL.	TIME RATING	MODEL	FRAME NO.
		RPM.	V.	HZ	F	CONT.	TIK-FCKW	N5808



- Note:
- 1) Tolerance of shaft center height : +0.00 inch ~ -0.06 inch.
 - 2) Tolerance of shaft end diameter : +0.00 inch ~ -0.001 inch.
 - 3) For direct coupling.
 - 4) Auxiliary terminal box is optional and dependent on specified accessories.
 - 5) Approximate weight = 5400 lbs.
 - 6) Drive end bearing: 6224C3.
Opposite drive end bearing: 6224C3.
 - 7) Direction of rotation : C.W (viewed from non-drive end).
 - 8) Total length will be extended 11.8 inch to meet 85dBA for 4 pole motors.

Preliminary Drawing for Reference Only



BASIC DWG NO: AL-FB-5633

CERTIFIED BY:		DATE:
DESIGNED	C.Y.WEN	DIMENSIONS IN inch
CHECKED	T.F.CHENG	3RD ANGLE PROJECTION
APPROVED	T.F.CHENG	DATE: NOV.30.2009