

OUTLINE 3-PHASE INDUCTION MOTOR

TOTALLY ENCLOSED
FAN COOLED
SQUIRREL CAGE ROTOR
ANTI-FRICTION BEARING

PROJECT NO:

CUSTOMER:

PO. NO:

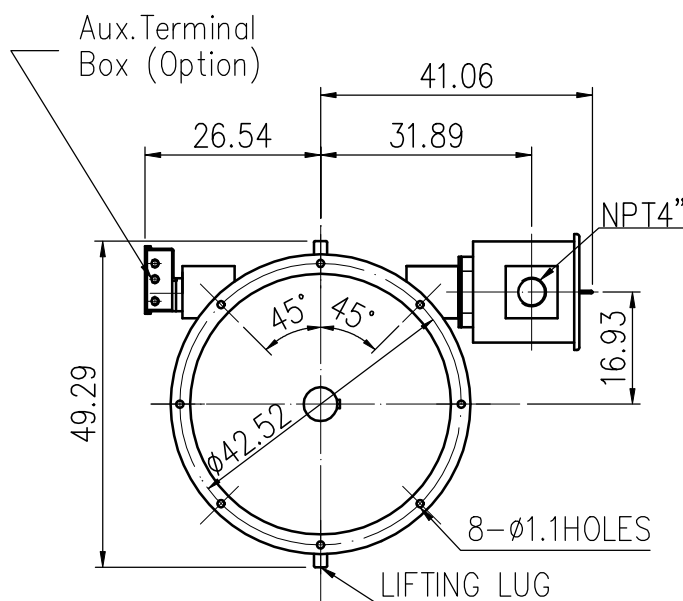
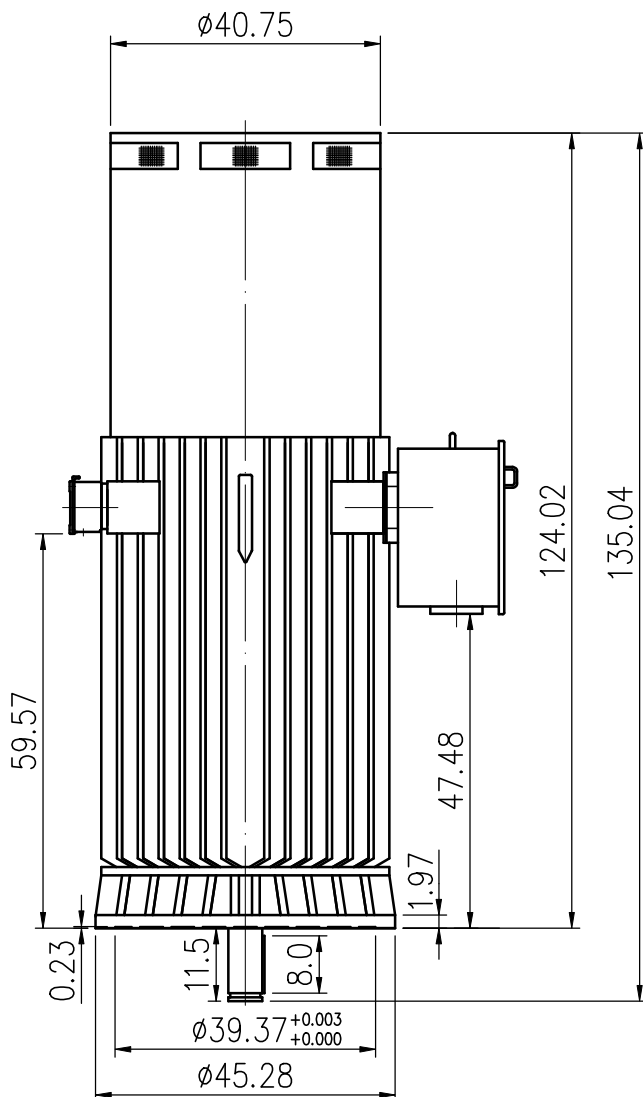
ORDER NO:

OUTPUT	POLE	SYN. SPEED	VOLT.	FREQ	INSUL.	TIME RATING	MODEL	FRAME NO.
		RPM.	V.	HZ	F	CONT.	TIK-FCKTW	N7808VP

Preliminary Drawing for Reference Only

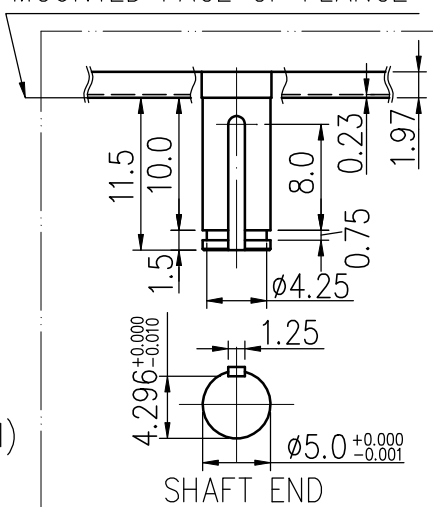
*THRUST LOAD CAPACITY

_____ LBS CONTINUOUS DOWN
 _____ LBS MOMENTARY DOWN
 _____ LBS INSTANTANEOUS UP
 _____ NONREVERSE RATCHET MECHANISM
 _____ DIRECTION OF ROTATION
 (VIEWED FROM TOP SIDE)



VIEW FROM SHAFT END

MOUNTED FACE OF FLANGE



Note:

- (1) For direct coupling
- (2) Approximate weight=17160lbs
- (3) Auxiliary terminal box is optional and dependent on specified accessories
- (4) Drive end bearing: 6228C3(lubrication:grease)
opposite drive end bearing: 29334/6032(lubrication:oil)
(Thrust bearing)



BASIC DWG NO:AL-FB-5322

CERTIFIED	BY:	DATE:
DESIGNED	Y.R.YANG	DIMENSIONS IN inch
CHECKED	T.F.CHENG	3RD ANGLE PROJECTION
APPROVED	T.F.CHENG	DATE: FEB.12.2010