

# OUTLINE 3-PHASE INDUCTION MOTOR

TOTALLY ENCLOSED  
FAN COOLED  
SQUIRREL CAGE ROTOR  
ANTI-FRICTION BEARING

PROJECT NO:

CUSTOMER:

PO. NO:

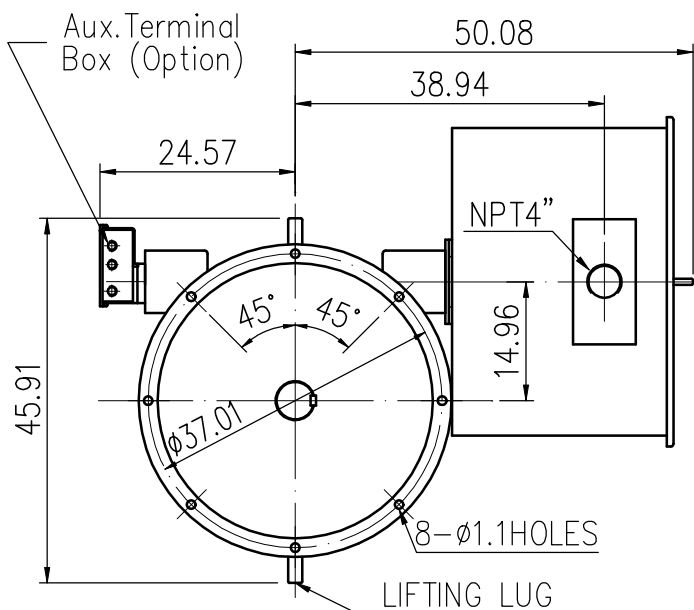
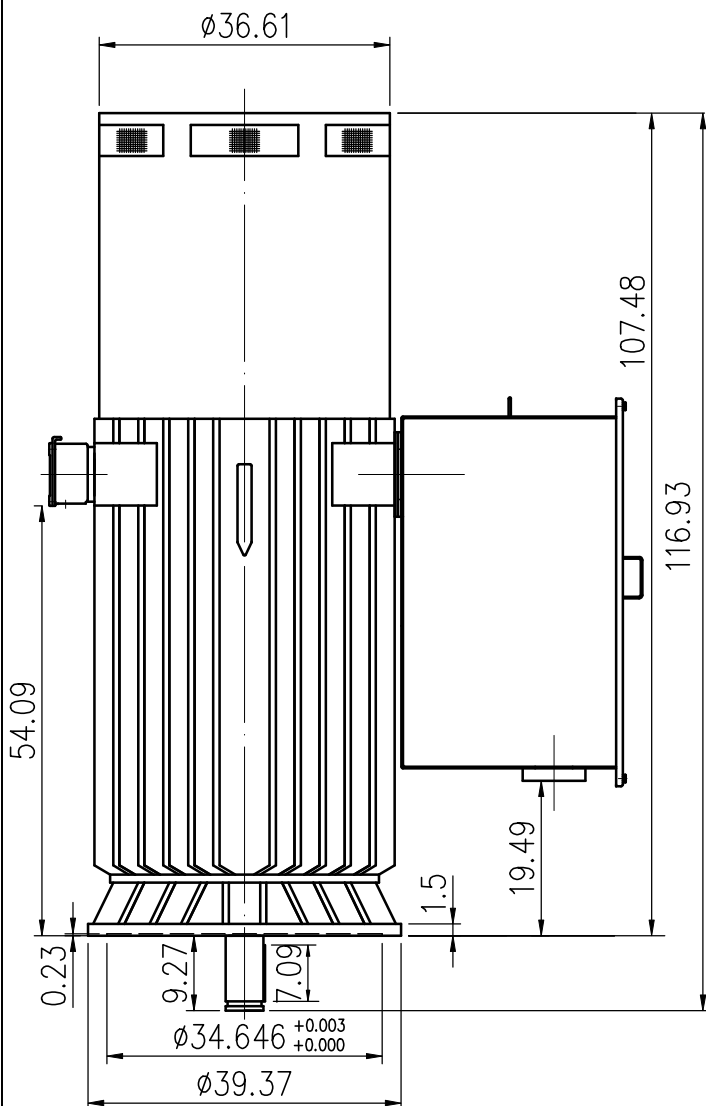
ORDER NO:

OUTPUT	POLE	SYN. SPEED	VOLT.	FREQ	INSUL.	TIME RATING	MODEL	FRAME NO.
		RPM.	V.	HZ	F	CONT.	TIK-FCKTW	N6810VP

Preliminary Drawing for Reference Only

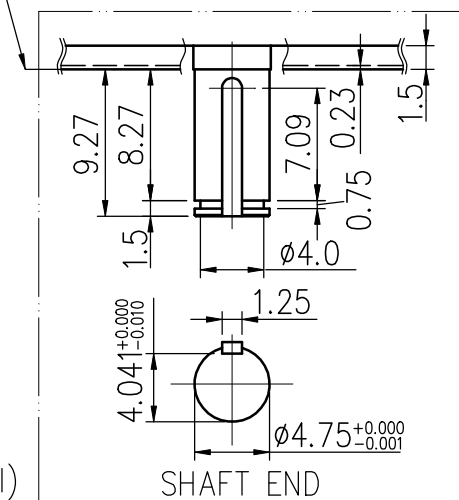
\*THRUST LOAD CAPACITY

\_\_\_\_ LBS CONTINUOUS DOWN  
\_\_\_\_ LBS MOMENTARY DOWN  
\_\_\_\_ LBS INSTANTANEOUS UP  
\_\_\_\_ NONREVERSE RATCHET MECHANISM  
\_\_\_\_ DIRECTION OF ROTATION  
\_\_\_\_ (VIEWED FROM TOP SIDE)



VIEW FROM SHAFT END

MOUNTED FACE OF FLANGE



Note:

- (1) For direct coupling
- (2) Apporximate weight=13670lbs
- (3) Auxiliary terminal box is optional and dependent on specified accessories
- (4) Drive end bearing: 6226C3(lubrication: grease)  
opposite drive end bearing: 29330/6028(lubrication: oil)  
(Thrust bearing)



BASIC DWG NO:AL-FB-5477

CERTIFIED	BY:	DATE:
DESIGNED	Y.R.YANG	DIMENSIONS IN inch
CHECKED	T.F.CHENG	3RD ANGLE PROJECTION
APPROVED	T.F.CHENG	DATE: FEB.13.2010