

OUTLINE 3-PHASE INDUCTION MOTOR

TOTALLY ENCLOSED
FAN COOLED
SQUIRREL CAGE ROTOR
ANTI-FRICTION BEARING

PROJECT NO:

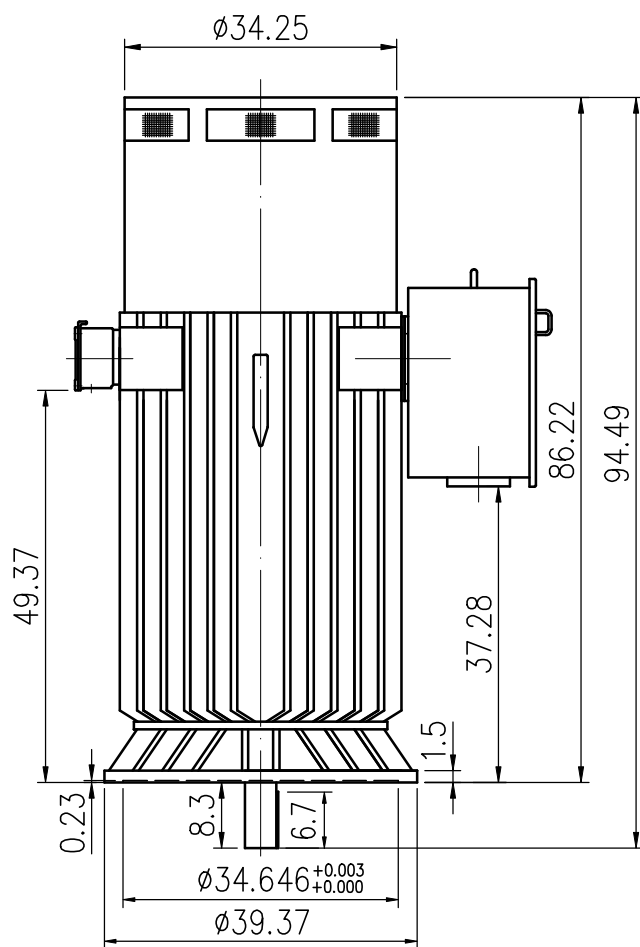
CUSTOMER:

PO. NO:

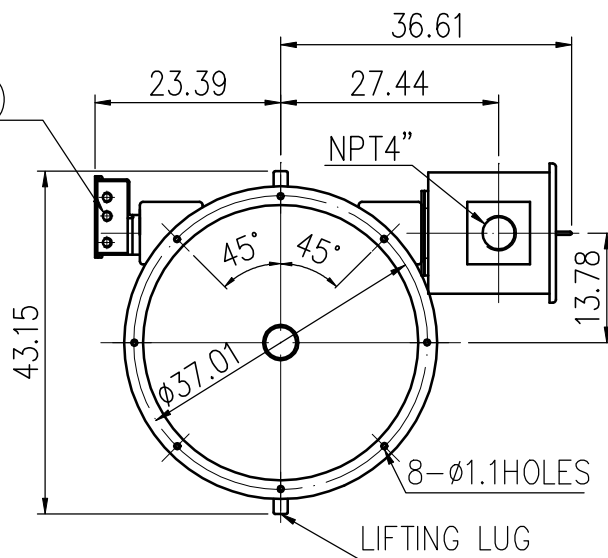
ORDER NO:

OUTPUT	POLE	SYN. SPEED	VOLT.	FREQ	INSUL.	TIME RATING	MODEL	FRAME NO.
		RPM.	V.	HZ	F	CONT.	TIK-FCKTW	N6310VP

Preliminary Drawing for Reference Only

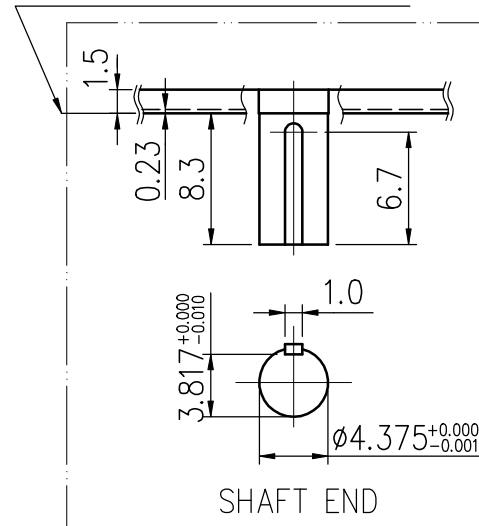


Aux. Terminal
Box (Option)



VIEW FROM SHAFT END

MOUNTED FACE OF FLANGE



Note:

- (1)For direct coupling
- (2)Apporximate weight=10350lbs
- (3)Auxiliary terminal box is optional and dependent on specified accessories
- (4)Drive end bearing: 6224C3(lubrication:grease)
opposite drive end bearing: 7324B(lubrication:grease)
- (5)Extra down thrust load shall not be allowed
- (6)Without nonreverse ratchet mechanism



BASIC DWG NO:AL-FB-5565

CERTIFIED	BY:	DATE:
DESIGNED	Y.R.YANG	DIMENSIONS IN inch
CHECKED	T.F.CHENG	3RD ANGLE PROJECTION
APPROVED	T.F.CHENG	DATE: FEB.20.2010