

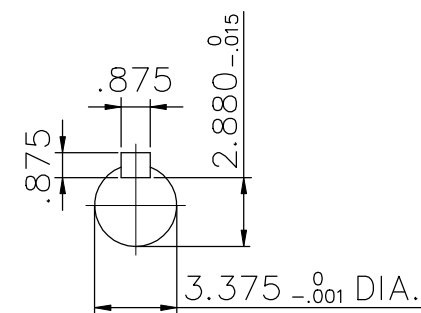
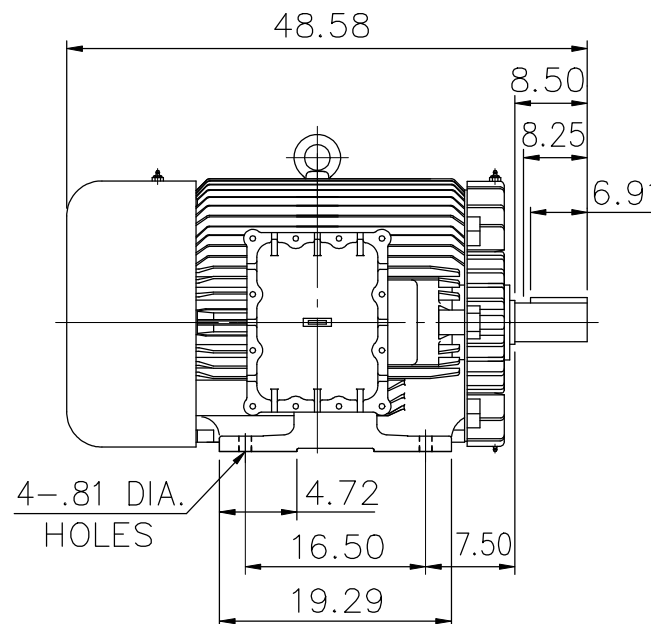
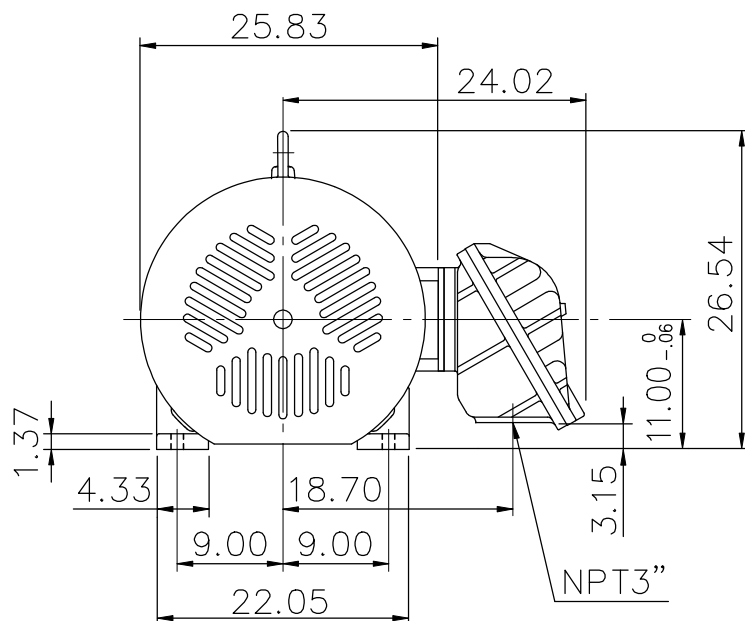
## EXPLOSION-PROOF MOTORS

## SQUIRREL-CAGE INDUCTION

ENCLOSURE: TOTALLY ENCLOSED  
HORIZONTAL: FOOT-MOUNTED


CAST IRON FRAME  
FRAME 445T

COOLING: FAN COOLED  
CLASS I , DIVISION I , GROUP D.  
CLASS II , DIVISION I , GROUP E,F & G



- (1) DIMENSIONS ARE IN INCHES.  
(2) APPROXIMATE WEIGHT= 2643 LBS  
(3) INTERNAL VOLUME OF CONDUIT BOX= 743. 4 CU, IN.  
(4) DRIVE END BEARING 6320  
    OPPOSITE DRIVE END BEARING 6318  
(5) ALL DATA SUBJECT TO CHANGE WITHOUT NOTICE  
(6) FOR CONSTRUCTION USE ONLY CERTIFIED DATA

初步圖面，僅供參考

OUTPUT	POLE	SYN. SPEED	VOLT	FREQ.	
					CERTIFIED BY _____ DATE _____
			DR. BY <u>W. D. KUD</u>	<div style="display: flex; justify-content: space-between; align-items: center;"> <div style="text-align: center;"> <h2 style="margin: 0;">DIMENSION SHEET</h2> </div> <div style="font-size: 2em; font-weight: bold; margin-top: 20px;">AS-968633</div> </div>	
			CK. BY <u>L. J. LEE</u>		
			APP. BY <u>T. M. LIAD</u>		
			DATE <u>NOV. 27, 2008</u>		