

# SUPERMAX-841 SEVERE DUTY ALTERNATING CURRENT MOTORS

## SQUIRREL-CAGE INDUCTION

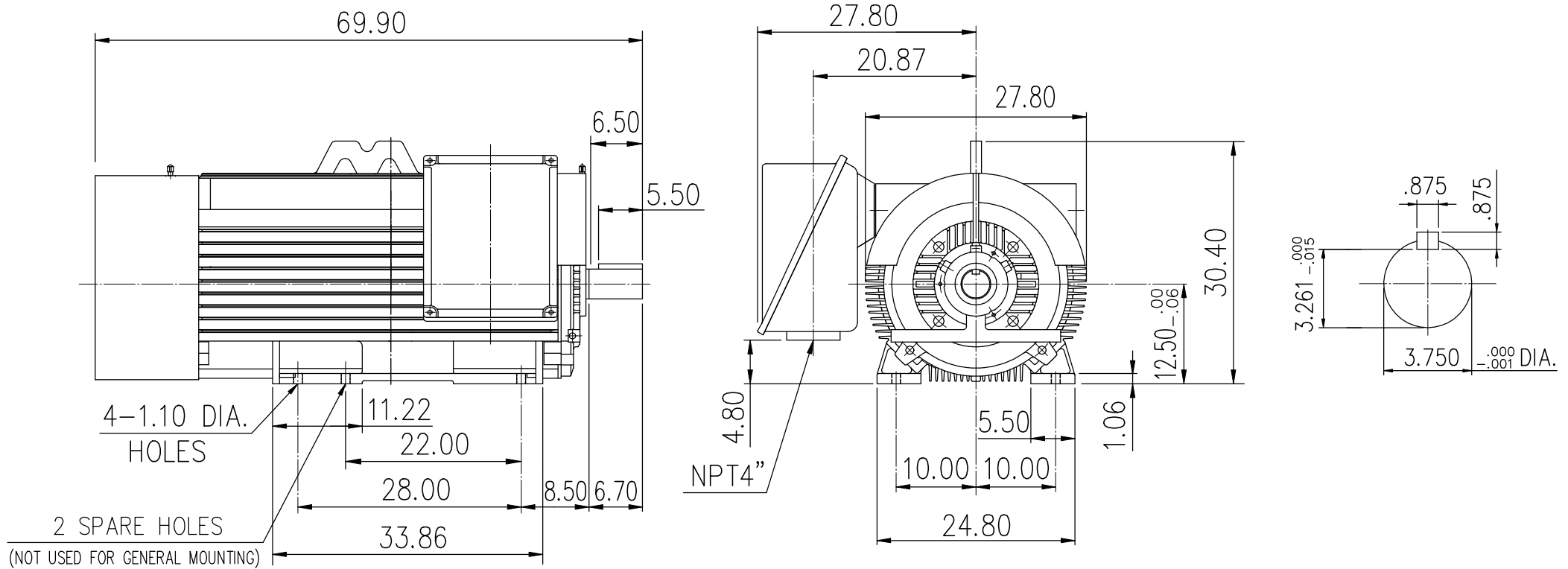
ENCLOSURE: TOTALLY ENCLOSED

MOUNTING: FOOT

CAST IRON FRAME


FRAME N5007/9

COOLING: FAN COOLED



初步圖面，僅供參考

- (1) DIMENSIONS ARE IN INCHES.  
(2) APPROXIMATE WEIGHT = 4400 LBS.  
(3) DRIVE END BEARING 6222C3  
OPPOSITE DRIVE END BEARING 6222C3

OUTPUT	POLE	SYN. SPEED	VOLT	FREQ.	CERTIFIED BY _____ DATE _____
			DR. BY <u>W. D. KUD</u> CK. BY <u>L. J. LEE</u> APP. BY <u>C. L. WANG</u> DATE <u>AUG. 11, 2011</u>		
			DIMENSION SHEET		
			AS-003191		